

APR-JUN  
2023

PINSANDNEEDLES.COM

7300 Pearl Rd. Middleburg Hts, OH 44130  
(440) 243-6400  
middleburghts@pinsandneedles.com

# THE PINS POST

Spring Is Here and So Are  
New Deals on Our Machines!



Baby Lock Triumph



JANOME M7 Continental

## SAVE THE DATE!!!

**April 17th to 19th**

Join us for embroidery fun with Tracey and Urban from Zundt Designs!

**May 19th & 20th**

BERNINA Savvy Stitching + Clever Quilting & Q-Matic Discovery

**May 24th**

Dime Virtual Embroidery & Heat Transfer

**June 16 & 17th**

2-Day Thread Painting (Hands-on) Event!

## NOW IN STOCK!



B 770 QE PLUS  
Kaffe Edition

B 475 QE  
Kaffe Edition



BERNINA Q24

Scan to Discover  
New Machines,  
Classes, and Events at  
PinsAndNeedles.com







# We are Ohio's Largest Sewing, Quilting, and Embroidery Dealer!

- ✓ Free Classes
- ✓ Huge Inventory
- ✓ On-Site Repairs
- ✓ Quality Notions
- ✓ Large Showroom
- ✓ Designer Fabric
- ✓ Special Events



Baby Lock  
Solaris Vision



Bernina  
Q24 (Long Arm)



Brother  
PR1050X



PFAFF  
640

**baby lock**

## GET STARTED KIT

*Solaris* VISION

**SAVE UP TO 75% ON A GET STARTED KIT**

WHEN YOU PURCHASE A BABY LOCK SOLARIS VISION EMBROIDERY, SEWING, AND QUILTING MACHINE.

- Baby Lock Love of Sewing Membership
- Baby Lock Solaris 30 Piece Foot Kit
- Baby Lock 5" x 7" Magnetic Frame
- Baby Lock Magnifying Lens
- Baby Lock Gold Scissor Set
- 6 More!

\*OFFER VALID JANUARY 1- MARCH 24, 2023, AT PARTICIPATING BABY LOCK RETAILERS.

# 0% Interest

## FOR UP TO 60 MONTHS

36 MONTHS ON PURCHASES OF \$2,000 OR MORE\*

48 MONTHS ON PURCHASES OF \$3,000 OR MORE\*

60 MONTHS ON PURCHASES OF \$5,000 OR MORE\*



# JAN'S JABBER

Spring is here how exciting!

Hope you are getting out back into your routines! Do you need a push to get back to sewing? Please come in let's get involved in sew social, a class or join our many charity groups.

The amazing people and volunteers are absolutely splendid. They are friendly, helpful and full of knowledge to share. It is amazing how much good happens in our building.

So proud to be apart of it, come join us!

*Thanks, and see you soon! - Jan*

# TABLE OF CONTENTS

## CLASSES

4	SEWING
6	EMBROIDERY
8	QUILTING
10	SERGER
11	SOFTWARE
12	SPECIALTY & CHARITY

## CALENDARS

13	APRIL
14	MAY
15	JUNE
16	MEMBERSHIP & COUPONS



## SEW SOCIAL!

### (FREE 2-HOUR MEETING)

Join us monthly for a FREE 2-hour social with an hour of Sew & Tell and an hour-long presentation of the latest techniques & tools on the market! Find inspiration to take your projects to the next level!

Each Sew Social starts at 10:00 and ends at 12:00. See the dates below:

April	May	June
Sat 4/8	Wed 5/10	Wed 6/7
Wed 4/12	Thur 5/11	Thur 6/8
Thur 4/13	Sat 5/13	Sat 6/10



## Everything Embroidery

FREE Monthly Class covering everything embroidery. We will cover the newest embroidery tech, products, threads, and more. Bring in your projects for show and tell! All Sessions 10:00 - 12:00

**BONUS:** Receive a **FREE design every month**. Join us to see what the free design is and the newest quilt square pattern!

\*\*\* 50% OFF FABRIC IS REDUCED TO 75% OFF \*\*\*

April	May	June
Fri 4/28	Fri 5/26	Fri 6/23
Sat 4/29	Sat 5/27	Sat 6/24



## Appliqué Block of the Month

with Michele G. & Lynne J.

Class Fee: \$25.00/class (Pattern Included)  
Class Level: Beginner (Great Starting Point!)



Want to get more proficient with your sewing machine? Appliqué techniques are your answer! Each month we will make a block using specific techniques, stitches, and feet to enhance your sewing capabilities. **(2.5-Hour Classes)**

Sat	4/1	9:30 – 12:00, 12:30 – 3:00
Tue	4/4	9:00 – 11:30, 12:00 – 2:30, 3:00 – 5:30, 6:00-8:30
Wed	4/5	10:30 – 1:00, 1:30 – 4:00
Tue	5/2	9:00 – 11:30, 12:00 – 2:30, 3:00 – 5:30, 6:00-8:30
Wed	5/3	10:30 – 1:00, 1:30 – 4:00
Sat	5/6	9:30 – 12:00, 12:30 – 3:00
Sat	6/3	9:30 – 12:00, 12:30 – 3:00
Tue	6/6	9:00 – 11:30, 12:00 – 2:30, 3:00 – 5:30, 6:00-8:30
Wed	6/7	10:30 – 1:00, 1:30 – 4:00

## Kids Sew (4 Sessions)

with Donna Miller

Class Fee: \$40 for 4 Classes (or \$15 each)

Your child will learn all about sewing machine operation, laying out patterns and cutting fabric, making elastic/drawstring casings, hemming, facing and much more. **Two separate sessions from 3:30 - 4:30 and from 4:45 - 5:45.**



Tue	4/4, 4/11, 4/18, 4/25
Tue	5/2, 5/9, 5/16, 5/23, 5/30
Tue	6/6, 6/13, 6/20, 6/27

## Advanced Teen Garment Sewing (4 Sessions)

with Donna Miller

Class Fee: \$40 for 4 Classes (or \$15 each)  
Class Level: Intermediate



Make a new wardrobe, choosing from patterns that Ms. Donna has available! Based on which project you choose, it could take 3 - 6 weeks. At least 1 year of sewing experience required, ages 10 - 16. **Classes meet from 4:00 to 5:00**

Wed	4/5, 4/12, 4/19, 4/26
Wed	5/3, 5/10, 5/17, 5/24, 5/31
Wed	6/7, 6/14, 6/21, 6/28

## Mondo Bag

with Donna Miller

Class Fee: \$40.00  
Class Level: Beginner



There is 3 different sizes you can choose to make in class. It can be made out of 2.5 or 5 inches squares. This bag is mondo cool and mondo easy to make.

Fri	5/12	1:00 - 5:00
-----	------	-------------

## Featherweight Club

with Michele Gillombardo

Class Fee: \$25.00 (Pattern Included)  
Class Level: Beginner (Great Starting Point!)



Let's get those vintage sewing machines out of their box and sew something on them. You choose the project you would like to do during our club time. Get simple sewing and care tips for your Featherweight!

Mon	4/24	11:00 – 1:30
Mon	5/22	11:00 – 1:30
Mon	5/26	11:00 – 1:30

## Michele's Open Sew

with Michele Gillombardo

Class Fee: \$20.00  
(or \$40.00 w/ Instructor Help)



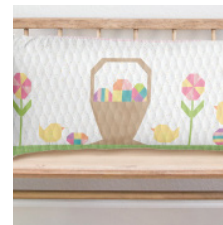
Whether you are sewing, quilting, serging, or embroidery. Bring your project(s) and have some fun with others for a full day of creating! You will have plenty of room to spread out.

Sun	4/23, 5/28, 6/25	10:00 - 3:00
-----	------------------	--------------

## Bench Pillows/Table Toppers by Riley Blake

with Michele Gillombardo

Class Fee: \$75.00 (Kit Included)  
Class Level: Beginner



Each month we will sew together a seasonal themed Bench Pillow/Table Topper by Riley Blake. Techniques used include piecing, applique, using decorative stitches and using embellishments.

Thur(s)	4/20, 5/25, 6/22	10:00 – 2:00
Sat(s)	4/29, 5/27, 6/24	10:00 – 2:00

## Runaround Bag

with Donna Miller

Class Fee: \$25.00  
Class Level: Beginner



Think of this class as "usage 3"! Great for anyone that just got done with basic usage and wants to learn more. This bag will teach you how to put a zipper in and how to line the inside so no seams show.

Mon	4/24, 6/26	1:00 - 3:30
-----	------------	-------------

## Beach Screen Tote

with Donna Miller

Class Fee: \$35.00  
Class Level: Beginner



This tote has exterior pockets all around and optional zippered pocket size can be adjusted to make all size totes. This tote is great for the beach.

Mon	5/22	12:00 - 3:30
-----	------	--------------



with Donna Miller

Class Fee: \$30.00  
Class Level: Intermediate

Do you have an old shirt that's a memory of a loved one? Join Donna for her Memory Teddy Bear class and convert that shirt into a huggable teddy bear!



*Fri*      *6/9*      *1:00 - 3:30*

with Karen Spears

Class Fee: \$25.00  
Class Level: Beginner

Transform a simple composition notebook into a lovely personalized journal. Class includes a kit containing the notebook and fabrics to complete the journal.



Tue	4/6	1:30 – 4:00
Mon	6/5	1:30 – 4:00
Thu	7/20	1:30 – 4:00
Thu	8/17	1:30 – 4:00

with Patsy Weiss

Class Fee: \$30.00  
Class Level: Beginner

Need a new bag for the beach? Make it out of mesh and be the envy of the crowd. Roomy bag made with colorful cotton fabric and mesh. For all levels of sewists.



Thu 4/6 10:30 – 1:30

Class Fee: \$25.00  
Class Level: Beginner

Donna can help you finish a project you're working on and not able to complete or she will have a few options of new projects you can choose from!

Fri 4/7 6:00 - 8:30  
Fri 5/5 6:00 - 8:30  
Fri 6/2 6:00 - 8:30



with Donna Miller

Class Fee: \$35.00  
Class Level: Beginner

This sleek wallet has everything you will need to keep organized. It has pockets for everything and a zippered pocket for coins. It can also be made out of cork.

Tue 4/28 10:00 - 4:30



## with Michele Gillombardo

Class Fee: \$40.00  
Class Level: Beginner

This McKenna Ryan Quilt Design uses Sewing and Applique Techniques. You can create the full quilt (53" x 63") or just one of the three panels. Take one or all the classes to have it completed by the holiday season.

Thur(s) 8/17, 9/14, 10/19, 11/16, 12/14

10:00 - 2:00 PM



# Celebration of Color from Kaffe



# BERNINA 475 QE (Kaffe Edition)

- Easy to navigate, modern color touch screen
- Front load bobbin
- 5.5mm wide stitches
- 21 exclusive hand-drawn stitches by Kaffe Fassett
- Raise or lower the presser foot at the same time with your knee
- Press a button to cut your thread
- Adjustable presser foot pressure
- Patchwork Foot #37 included



# BERNINA 770 QE Plus (Kaffe Edition)

- Extra large 7" color touch screen
- BERNINA Stitch Regulator
- Pinpoint Placement and Lock function
- 74 quilting stitches, 8 embroidery fonts, 26 additional Kaffe quilting designs, 339 embroidery designs w/ 64 inspired by Kaffe
- KickStart Function
- Group/Ungroup and rearrange designs
- Quilting in the Hoop
- Optional BERNINA Smart Drive Technology module

# EMBROIDERY

## Kimberbell Cuties Table Toppers

with Michele Gillombardo

Class Fee: \$35.00  
Class Level: Beginner

Create a new seasonal table topper every month entirely on your embroidery machine! Each 22 X 22 toppers features a variety of embellishments and coordinating block by block center and corner designs. These are all made in a 5 x7 hoop or larger. Purchase of KB Cuties Vol.2 CD required.

Sat	4/8	12:30 – 4:00	Mon	5/22	2:00 – 5:30
Tue	4/25	2:00 – 5:30	Sat	6/17	12:30 – 4:00
Sat	5/27	12:30 – 4:00	Mon	6/26	2:00 – 5:30



## Clear Blue Tiles Usage

with Michele Gillombardo

Class Fee: \$25 (Free if you purchased your tiles from Pins)  
Class Level: Beginner

Are those Kimberbell Clear Blue tiles still in a box? Learn how to set them up, mark and embroider away. We will learn edge to edge or Custom Block Placement and design.

Sat	4/22	1:30 – 3:30	Sat	6/24	2:00 – 4:00
Tue	5/16	10:30 – 12:30			



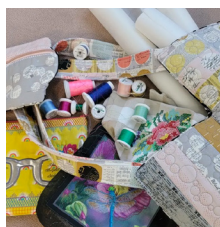
## Loose Threads

with Stephanie Marr

Class Fee: \$30.00  
Class Level: Beginner

Stuck with an embroidery project? Need help finishing those IQ Designer/My Design Center projects? Come in to let me help you tie up those loose threads and embroidery projects!

Tue 4/25, 5/23, 6/27 11:00 – 2:00



## Embroidery Workshop: Batik Beauty

with Diann Raica

Class Fee: \$20.00  
Class Level: Intermediate

Sharpen your embroidery skills with new techniques, learn to do in the hoop continuous quilting, free-standing lace, unique individual projects.

Sat 4/1, 5/6, 6/3 1:30 – 3:30



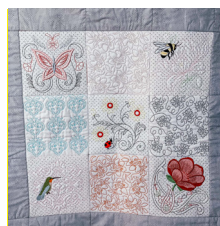
## Anita University 201

with Luci Slywka

Class Fee: \$25.00  
Class Level: Intermediate

This is a multi-month "in the hoop" embroidered quilt block series. We will do 1 to 3 blocks as time allows.

Thu 4/20, 5/18, 6/15 5:00 – 7:30



## Embroidery Block-Of-The-Month

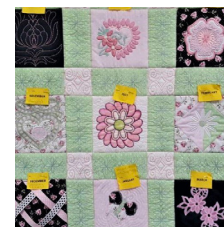
with Michele Gillombardo

Class Fee: \$20.00  
Class Level: Beginner

Expand your knowledge of embroidery each month as we explore more embroidery tips like flip & stitch, embroidered piecing, embroidered decorative stitch, crazy patch, cut work, embroidery appliqué, embroidered fabric texturing, embroidered corner stones, sashing and MORE!

Sat 4/8 10:00 – 12:00

Sat 6/17 10:00 – 12:00



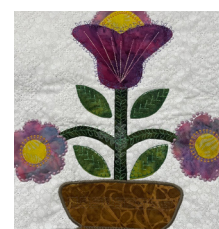
## Appliqué & IQ/MDC

with Michele Gillombardo

Class Fee: \$25.00  
Class Level: Beginner

Using IQ Design or Design Center in YOUR Baby Lock or Brother embroidery machines, we will program your machine to stitch out around your applique designs.

Sat	4/22	10:00 – 12:30
Tue	5/16	1:30 – 4:00
Thu	6/22	2:30 – 5:00



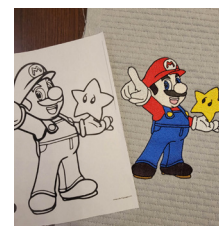
## IQ/MDC 101

with Stephanie Marr

Class Fee: \$35.00 (or \$25.00 BYO)  
\$15.00 to Watch  
Class Level: Beginner

New to IQ Designer or My Design Center? Get Ready to learn the basics of IQ/MDC with Stephanie's new 101 class! Go from page to screen to finished embroidery design by learning how to digitize from a coloring book page or line art!

Fri	5/12	1:00 – 3:00 - Embroidery from Coloring Pages
Fri	5/19	1:00 – 3:00 - Key Fobs and Patches
Fri	6/2	1:00 – 3:00 - Quilt Block Basics
Fri	6/9	1:00 – 3:00 - Embroidery from Coloring Pages
Fri	6/16	1:00 – 3:00 - Key Fobs and Patches



## My IQ Design Club

with Stephanie Marr

Class Fee: \$35.00 (or \$25.00 BYO)  
\$15.00 to Watch  
Class Level: Intermediate

Calling all Destiny, Dream Machine, Solaris, Luminaire, Meridian, Altair, & Stellaire owners. Join us an learn advanced techniques using IQ Designer / My Design Center, etc. Join us to learn all the innovative features and get the ah-ha moment of why you purchased this machine.

Tue 4/18, 5/16, 6/20 1:00 – 3:00, 6:00 – 8:00





## Kimberbell Open Sew

with Michele Gillombardo

Class Fee: \$20.00 (w/o Assistance)  
\$40.00 (w/ Assistance)  
Class Level: Beginner

Embroider alongside other Kimberbell lovers. Grab any Kimberbell design(s) you have, gather your supplies, thread, directions for a fun day of embroidering! I will be there to help you out too!

Tue	5/30	10:00 – 4:00
Mon	6/19	10:00 – 4:00
Mon	8/21	10:00 – 4:00

## How to Embroider on a Baseball/Basketball

with Mary Hostetler

Class Fee: \$40.00 PER CLASS  
Class Level: Beginner

Create a one-of-a-kind gift for your favorite ball player. A unique gift idea for a new baby, a graduating senior, or your Little League All-Star. It's not as complicated as you might think!

Fri	4/21	10:30 – 1:30 (Baseball)
Fri	5/5	10:30 – 1:30 (Basketball)



## Embellished Sweatshirt

with Luci Slywka

Class Fee: \$30.00  
Class Level: Beginner

We will insert a zipper; embroider a design on the sweatshirt.

Thur	3/30	4:30 – 7:30
------	------	-------------



## Solaris Learning Lab

with Patsy Weiss

Class Fee: \$30.00  
Class Level: Beginner



A class for Solaris owners to discover what we love about this fantastic machine. Does not replace usage and advanced usage class. We will take a deeper dive into what these beauties can do. This is a learning process, not a project class.

Class will focus on connecting embroideries. We will explore connecting with the projector, with the border function and with pattern connect. Plus, the upgrade connect patterns!!!

Next we will focus on the lights, camera and projector that make this machine so special.

Lastly we will focus on creative buttonholes and button options in both sewing and embroidery like you never imagined.

Tue(s)	4/18, 5/16, 6/20	10:00 – 1:00
--------	------------------	--------------

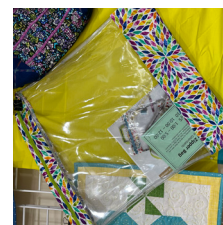
## Clear View Zipper Bag

with Michele Gillombardo

Class Fee: \$40.00 PER CLASS  
Class Level: Beginner

Here is a great way to keep things organized, so it will all be there when you have time to work on your projects. Creating this Clear Zipper Bag on your 4 or 8 thread serger, will teach you many techniques.

Mon	6/5	1:00 – 5:00
Thur	8/10	10:00 – 2:00



## Kimberbell: Spoonful of Sunshine

with Michele Gillombardo

Class Fee: \$129.00 PER CLASS  
Class Level: Beginner

Learn fresh techniques creating three projects on your embroidery machine. This one-day event will have us stitching on a variety of new Kimberbell blanks.

Mon	5/8	9:15 – 3:15
Sat	5/13	9:00 – 3:00



## BERNINA L890

- One-Step BERNINA Air Threader -
- Intuitive operation via touch screen -
- Fast, precise, & quiet -
- Total Stitch Control-

### Special In-Store Only Discounts & Savings!

(Classroom Demo Models Available)

## Quilting 102

with Michele Gillombardo

Class Fee: \$120.00  
Class Level: Beginner

Fine tune your quilting skills with creating this large 5 Block Quilt. We will review piecing, accurate cutting, 1/4 inch and mitered border techniques in this Quilt Course. This six-part class course is for the novice and seasoned quilter! You will complete the quilt in the course!

#4	Tue	4/25	10:30 - 1:30
#5	Mon	5/1	10:30 - 1:30
#6	Mon	5/15	10:30 - 1:30

## Your Quilt Class

with Michele Gillombardo

Class Fee: \$30.00  
Class Level: Beginner

New to quilting or are you a quilter with years of experience? This class is for both! We can help you in whatever stage you are at creating your quilt. Learn to read the pattern, sewing Y seams, getting the perfect 1/4-inch seam, embroidery, or putting on a binding.

Mon 4/24, 5/22, 6/26 10:30 – 1:30



## Quilt As You Go II

with Karen Spears

Class Fee: \$25.00  
Class Level: Beginner

A new look at Quilt as You Go makes it easy to quilt each block individually and then join them together on your home sewing machine no matter the size. Rather than quilting just the block and then adding the backing this method allows you to do all three layers at once. Perfect for any block!

Thur(s) 5/4, 7/13 10:30 – 1:00



## Landscape / Art Quilts

with Luci Slywka

Class Fee: \$25.00  
Class Level: Intermediate

If you are curious about the interesting process of Landscape or Art type of quilting this class will provide a look at the some of the techniques for making a lovely art piece.

Thur(s) 4/6, 4/13, 5/4, 5/11, 6/1, 6/8 5:00-7:30



## Ultimate Travel Bag 2.0

with Susan Scott

Class Fee: \$75.00  
Class Level: Beginner

Do you have old quilts at your house and don't know what to do with them come a join me and I will teach you how to make a jacket out of your old quilt.

Wed	4/12, 4/26	10:30 - 2:30
Wed	5/10, 5/24	10:30 - 1:00 (Continuing Education)



## Free Motion Quilting Mastery Class

with Etta Trimpi

Class Fee: \$100.00 for All 5 Sessions (\$129.00 to Borrow a Machine)  
Class Level: Intermediate

Tired of sending out your quilts? We will start from the beginning and learn how to do the quilting. This is a process and takes some time, so in this series of classes we will learn how to do just that.

#3	Sat	4/22	1:00 - 3:30
#4	Sat	5/27	1:00 - 3:30
#5	Sat	6/24	1:00 - 3:30



## Edge to Edge

with Kathy Zietlow

Class Fee: \$25.00  
Class Level: Beginner

If you've ever wanted to finish a quilt quickly, make a quilt completely on your own, or see what else you can do with your embroidery machine: you can now use your home embroidery machine to get quilting results like you'd see from a long-arm quilter.

Tue(s) 4/25, 5/23, 6/27 6:00 – 8:30



## Quilted Jacket

with Donna Miller

Class Fee: \$40.00  
Class Level: Beginner

Do you have old quilts at your house and don't know what to do with them come a join me and I will teach you how to make a jacket out of your old quilt.

Wed 5/31 10:30 – 2:30



## Weather Vane Table Runner

with Michele Gillombardo

Class Fee: \$50.00

Class Level: Beginner

This "Saturday in Paris" themed table runner has a variety of blocks to fine tune those piecing skills. Stitch-n-Flip, Corner Units, sashing and border units all come together with ease! Kit included in class cost.

Thur 6/1 3:00 – 5:30



## Jelly Roll Jacket (Two-Part Class)

with Karen Spears

Class Fee: \$50.00  
Class Level: Beginner

Turn a simple sweatshirt into a designer jacket with a simple jelly roll.

Tue	5/2	(#1)
Tue	5/16	(#2)

Wed	7/5	(#1)
Wed	7/19	(#2)





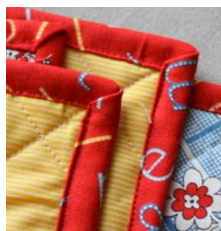
## Binding Workshop

with Karen Spears

Class Fee: \$30.00  
Class Level: Beginner

You created your lovely quilt, now let's finish it with a classic binding. Learn different ways to bind off your quilt including straight bias binding and scalloped binding.

Fri	4/7	10:00 – 12:30
Mon	6/5	10:00 – 12:30



## Basic Quilt

with Karen Spears

Class Fee: \$30.00  
Class Level: Beginner

Learning a basic quilt with layer cakes and charm packs, it could be your baby quilt or a throw. All the basics, sewing 1/4" seams, cutting accurately and much more!

Sat	4/15	10:30 – 1:30
-----	------	--------------



## Block Party

with Karen Spears

Class Fee: \$25.00  
Class Level: Beginner

No matter your skill level or the machine you own, this class is for you. Join us as we recreate classic antique blocks and review tips and tricks to design a quilt sampler that is unique to each person.

Thur	4/20, 5/18, 6/15	10:30 - 1:00
------	------------------	--------------



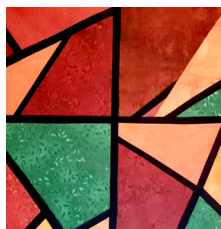
## Tiffany in Quilts

with Karen Spears

Class Fee: \$30.00  
Class Level: Beginner

Create a beautiful art quilt reminiscent of Tiffany glass with a layer cake. This is one of the easiest quilts you will ever make.

Mon	6/12	10:30 – 1:30
Mon	7/17	10:30 – 1:30
Mon	8/14	10:30 – 1:30



## T-Shirt Quilt

with Donna Miller

Class Fee: \$40.00  
Class Level: Beginner

Come join me and learn how to make a t-shirt quilt out of your loved ones clothes that also make great gifts.

Fri	5/12	11:30 - 3:30
-----	------	--------------



# QUILTING

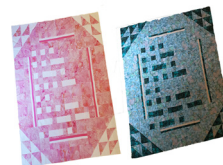
## Survivor Quilt

with Josie Prokop

Class Fee: \$25.00  
Class Level: Beginner

Designed with cancer survivors and those fighting illness in mind, this quilt will wrap the recipient in your love and support even if you cannot be present. The hidden meaning adds an extra layer of comfort. Simple steps make the message come to life. Join us to start piecing your message of hope to create your virtual hug.

Sat	4/8	12:00 - 2:30
-----	-----	--------------



## Economy Block Quilt

with Stephanie Marr

Class Fee: \$30.00  
Class Level: Beginner

Learn a quick and easy quilt block technique and turn it into a lap size quilt quickly! Minimal piecing skills required, so kid and beginner friendly! Use large print focal fabrics to make the blocks really stand out!

Sat	5/13	12:30 - 3:30
Sat	6/10	1:30 - 1:30



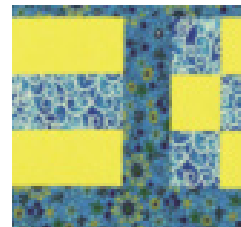
## Beginning Quilting

with Karen Spears

Class Fee: \$50.00  
Class Level: Beginner

New to quilting but don't know where to begin? This one-day workshop will get you started. You will learn to use a rotary cutter, piece two different blocks, add sashing and borders, and make a quilt "sandwich". Learn the basics of simple machine quilting and adding a binding. This is a class not to be missed, learn every step of quilting and complete your project to take home.

Mon	4/3	10:00 – 3:00
Wed	6/21	10:00 – 3:00



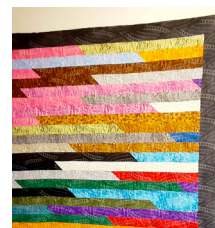
## Jelly Roll Race

with Karen Spears

Class Fee: \$30.00  
Class Level: Beginner

Create the entire quilt top in just one sitting. Fast and fun and no two are the same!

Wed	6/14	10:30 – 1:30
Mon	7/10	10:30 – 1:30
Wed	8/30	10:30 – 1:30



# SERGER

## Serger Ruffle Pillow

with Michele Gillombardo

Class Fee: \$60.00

Class Level: Beginner

Using a variety of serger feet and techniques, we will create this pillow completely on the serger!

Thur 4/27 10:00 - 4:00



## Serger Boot Camp

### Tote Bag with Michele Gillombardo

Class Fee: \$79.00 (Includes Kit)

Class Level: Beginner

Create this tote bag using your serger! We will do a coverhem, create puffing, embellish our tote bag fabric and much more. Kits are included with this class. Bring a lunch, snacks and drinks are provided. I have a 99% rate of students finishing their tote in class. Spend the day learning and creating with your serger!

Thur 4/6 10:00 - 5:00  
Mon 6/12 10:00 - 5:00



## Decorative Serger Pillow

with Patsy Weiss

Class Fee: \$30.00

Class Level: Beginner

This pillow is a study in decorative serger techniques with a band of pintucks and a strip of piping inserted to separate fabric panels; cover stitch is used as top-stitching on a narrow band with turned edges, and decorative chain stitch creates a diamond grid in contrasting thread. Must have chain and cover stitch on serger.

Thur 5/25 10:30 - 1:30



## The Wonderful Quilt

with Michele Gillombardo

Class Fee: \$40.00

Class Level: Beginner

Your serger can piece a quilt together using a perfect 1/4-inch seam allowance! This Wonderful quilt has minimal matched seams to make it easy. With a never-ending bobbin, this quilt will go together in no time!

Thur 6/1 10:00 - 2:00  
Mon 7/3 2:00 - 6:00



## Stacking Blocks Runner

with Michele Gillombardo

Class Fee: \$30.00

Class Level: Beginner

Using a variety of serger feet and techniques, we will create this pillow completely on the serger!

Thur 5/4 10:00 - 1:00  
Thur 6/29 10:00 - 1:00  
Thur 8/24 2:00 - 5:00



## Blooming Basket

with Michele Gillombardo

Class Fee: \$40.00

Class Level: Beginner

This basket is great to hold your serging notions or on your dining room table! This basket is all about the Flatlock stitch! Techniques include Piping, Wave Stitch, Rolled Hem, Chain Stitch and Flatlock! Any serger can create this project.

Thur 5/4, 6/29 1:00 - 6:00



## Serger Open Sew

with

Class Fee: \$20.00 No Assistance  
\$40.00 With Assistance

Class Level: Beginner

Did you finish that tote, tabletopper, quilt, t-shirt or zipper bag? Let's get busy serging and get them completed! Enjoy being with other serger enthusiasts with a potluck lunch too! Bring your projects and let's get it done!

Fri 7/7, 9/1 10:00 - 4:00



Koala

Save \$500  
On a Koala Studio

ARROW  
SEWING



Millie Cutting Table  
& Ironing Table

MSRP \$799

Sale \$499!



## Dime Perfect Embroidery

with Mary Ann Nicholas

Class Fee: \$30.00  
Class Level: Intermediate

PEP is a full-scale digitizing program. In class you will learn to edit, create, merge, convert files and much more. In each lesson you will learn to digitize step by step.

Sat(s) 4/1, 5/6, 6/3 10:30 - 12:30

**\*\*Requires a laptop (with software installed, a mouse, paper, and a pencil.**



## Simply Appliqué Embroidery Software

with Michele Gillombardo

Class Fee  
Class Level: Beginner

This creative appliquesoftware lets you merge designs, lettering and create in the hoop applique from any paper pattern! You read that right! We can even use the scan-n-cut to cut the applique pieces for us. You can choose hands on if you own the software or watch the class.

Thu 6/15 1:00 - 4:00  
Mon 7/3 11:00 - 2:00

Thur 9/21 3:00 - 6:00



**Long Arms are now affordable!**

Machine, frame and stitcher as low as \$2,499.99.  
Visit our store to try out your next machine!

Turn Scanned  
Images to  
Cut Designs!

brother

SDX 330D



## SOFTWARE

### Palette/PE-Design

Workshop with Mary Ann Nicholas

Class Fee: \$30.00  
Class Level: Intermediate

This workshop is project-oriented. Each workshop is aimed at teaching you to use the program to its fullest. You can edit, convert, create your own back-grounds and designs.

Sat	4/1	1:00 - 3:00
Tue	4/11	10:30 - 12:30
Sat	5/6	1:00 - 3:00
Tue	5/9	10:30 - 12:30
Sat	6/3	1:00 - 3:00
Tue	6/13	10:30 - 12:30



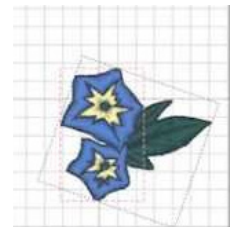
### Palette/PE-Design Usage

with Mary Ann Nicholas

Class Fee: \$35.00  
(Free w/ Software Purchase)  
Class Level: Beginner

This usage class was designed to show you how to use the tools for each section of the program

Thur(s) 4/13, 5/11, 6/8 5:30 - 7:30



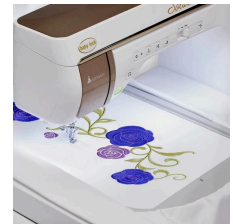
### Embrilliance Usage

with Mary Ann Nicholas

Class Fee  
Class Level: Beginner

This creative applique software lets you merge designs, lettering and create in the hoop applique from any paper pattern! You read that right! We can even use the scan-n-cut to cut the applique pieces for us. You can choose hands on if you own the software or watch the class.

Fri 4/28, 5/26, 6/23 2:00 - 4:00



**Q'nique 19X Elite**

**\$7,699**

Normally: \$8,499.95

+ FREE CUTIE OR Q-ZONE FRAME\*

**SAVE OVER \$2,000**



**Q'nique 16X Elite**

**\$4,999**

Normally: \$5,999.95

+ FREE CUTIE OR Q-ZONE FRAME\*

**SAVE OVER \$2,200**



# Specialty & Charity

## Scan N Cut Usage

with Michele Gillombardo

Class Fee: \$30.00  
(Free With Machine Purchase)  
Class Level: Beginner

Learn how to use your Brother Scan N Cut! Learn the ins and outs and take your skills to the next level.

Mon	4/24	5:00 – 8:00
Mon	5/15	2:00 – 5:00
Sat	6/10	10:00 – 1:00



## Baby Sew

Class Fee: (Free) Charity Event

Our volunteer groups get together to sew lap size quilts, NICU size quilts, tote bags and other items that make children of all ages smile a bit and help take their minds off their physical challenges. Our items are donated to babies, parents, and sick children at local hospitals.

Wed	4/5, 4/19, 4/26, 5/3, 5/17, 5/24, 6/7, 6/21, 6/28	10:00 - 12:00
-----	---	---------------



## Reservations Only

(Not an instructed class)

Class Fee: \$20.00 per Table

Are you tired of being stuck at home and need to get out?! Come use our space and get some sewing done with no interruptions from home! This is not an "instructed" class, simply a time slot for you to use our space and gain motivation to keep your projects going! Each person will have their own table and be 6+ feet apart. **All sessions meet from 11:00 - 4:00**

Wed 4/5	Fri 5/5	Fri 6/2
Thur 4/27	Tue 5/9	Fri 6/9
	Wed 5/17	Wed 6/28
	Wed 5/24	



## Fabric Painting

with Dottie Gilchrist

Class Fee: \$30.00  
Class Level: Intermediate

Turn a plain piece of material into a beautiful piece of art! It's not about having art skills it's learning to create and control the paint.

Fri	3/31	1:00 - 3:00
-----	------	-------------



## Scan N Cut Workshop

with Abbey Miller

Class Fee: \$20.00  
(Free With Machine Purchase)  
Class Level: Beginner

Learn how to use your Brother Scan N Cut! Learn the ins and outs and take your skills to the next level.

Wed	4/26, 5/17, 6/21	1:00 - 3:00
-----	------------------	-------------



## The Giving Doll

Class Fee: (Free) Charity Event

What is The Giving Doll? Our mission is to give faith, love, joy, hope and comfort to children worldwide, at times of need through the construction and distribution of handmade dolls.

This is an all day charity sewing day. if you are planning on hanging out with us for the entire day, please bring a lunch.

Thur	4/27, 5/25, 6/22	10:00 - 2:00
------	------------------	--------------



# Spring into Charity

## Ryan's Smiles



Put a smile on the face of an ill child. Make fun pillowcases to go to children's hospitals and Santa's Hideaway Hollow.

## Meals on Wheels

Who wouldn't love to eat a meal on a beautiful placemat? Help us get placemats into the homes of *Meals on Wheels* recipients!

More information and patterns available at Pins and Needles



Sunday	Monday	Tuesday	Wednesday	Thursday	Friday	Saturday
<div><h1>JANOME Continental M7 QCS BONUS Bundle!</h1><p>Celebrate The Limited Edition Continental M7</p><p>Learn to use this incredible machine by walking through the workbook, and expand your quilting with a variety of templates and rulers. There are also three AcuFeed Flex foot options and the Ultraglide Needleplat and Foot. Make sure that you use the right needle for your project by choosing between the three needle sets.</p></div> <div><p>Retail: \$7,499 <b>Your Price \$4,999</b> **Limited Quantities*</p></div>						<div><p><b>1</b></p><p><b>9:30</b> Applique Block of the Month</p><p><b>10:30</b> DIME Perfect Embroidery</p><p><b>12:30</b> Applique Block of the Month</p><p><b>1:00</b> Palette PE</p><p><b>1:30</b> Embroidery Workshop</p></div>
<div><p><b>2</b></p></div>	<div><p><b>3</b></p><p><b>10:00</b> Beginning Quilting</p></div>	<div><p><b>4</b></p><p><b>9:00</b> Applique Block of the Month</p><p><b>12:00</b> Applique Block of the Month</p><p><b>3:00</b> Applique Block of the Month</p><p><b>3:30, 4:45</b> Kids Sew</p><p><b>6:00</b> Applique Block of the Month</p></div>	<div><p><b>5</b></p><p><b>10:00</b> Baby Sew</p><p><b>10:30</b> Applique Block of the Month</p><p><b>11:00</b> Reservations Only!</p><p><b>1:30</b> Applique Block of the Month</p></div>	<div><p><b>6</b></p><p><b>10:00</b> Serger Boot Camp Tote Bag</p><p><b>10:30</b> Mesh Beach Bag</p><p><b>1:30</b> Composition Journal</p><p><b>5:00</b> Landscape/Art Quilts</p></div>	<div><p><b>7</b></p><p><b>10:00</b> Binding Workshop</p><p><b>6:00</b> Sip N Sew</p></div>	<div><p><b>8</b></p><p><b>10:00</b> Sew Social</p><p><b>10:00</b> Embroidery Block of the Month</p><p><b>12:00</b> Survivor Quilt</p><p><b>12:30</b> Kimberbell Cuties Table Toppers</p></div>
<div></div>	<div><p><b>10</b></p></div>	<div><p><b>11</b></p><p><b>10:30</b> Palette/PE-Design Workshop</p><p><b>3:30, 4:45</b> Kids Sew</p></div>	<div><p><b>12</b></p><p><b>10:00</b> Sew Social</p><p><b>10:30</b> Ultimate Travel Bag 2.0</p></div>	<div><p><b>13</b></p><p><b>10:00</b> Sew Social</p><p><b>5:00</b> Landscape/Art Quilts</p><p><b>5:30</b> Palette/PE-Design Usage</p></div>	<div><p><b>14</b></p></div>	<div><p><b>15</b></p><p><b>10:30</b> Basic Quilt</p></div>
<div><p><b>16</b></p></div>	<div><p><b>17</b></p></div>	<div><p><b>18</b></p><p><b>Zundt Designs Embroidery Event</b></p><p><b>10:00</b> Solaris Learning Lab</p><p><b>1:00</b> My IQ Design Club</p><p><b>3:30, 4:45</b> Kids Sew</p><p><b>6:00</b> My IQ Design Club</p></div>	<div><p><b>19</b></p><p><b>Zundt Designs Embroidery Event</b></p><p><b>10:00</b> Baby Sew</p></div>	<div><p><b>20</b></p><p><b>Zundt Designs Embroidery Event</b></p><p><b>10:00</b> Bench Pillows/ Table Toppers By Riley Blake</p><p><b>10:30</b> Block Party</p><p><b>5:00</b> Anita University 201</p></div>	<div><p><b>21</b></p><p><b>10:30</b> How to Embroider on a Baseball</p></div>	<div><p><b>22</b></p><p><b>10:00</b> Applique And IQ/MDC</p><p><b>1:30</b> Clear Blue Tiles Usage</p></div>
<div><p><b>23</b></p><p><b>10:00</b> Michele's Open Sew Sunday</p></div>	<div><p><b>24</b></p><p><b>10:30</b> Your Quilt Class</p><p><b>11:00</b> Featherweight Club</p><p><b>1:00</b> Runaround Bag</p><p><b>5:00</b> Scan N Cut Usage</p></div>	<div><p><b>25</b></p><p><b>11:00</b> Loose Threads With Stephanie</p><p><b>10:30</b> Quilting 102 (#4)</p><p><b>2:00</b> Kimberbell Cuties Table Toppers</p><p><b>3:30, 4:45</b> Kids Sew</p><p><b>6:00</b> Edge to Edge</p></div>	<div><p><b>26</b></p><p><b>1:00</b> Scan N Cut Workshop</p><p><b>10:00</b> Baby Sew</p><p><b>10:30</b> Ultimate Travel Bag 2.0</p></div>	<div><p><b>27</b></p><p><b>10:00</b> Serger Ruffle Pillow</p><p><b>10:00</b> The Giving Doll</p><p><b>11:00</b> Reservations Only!</p></div>	<div><p><b>28</b></p><p><b>10:00</b> Everything Embroidery</p><p><b>1:00</b> Have it All Wallet</p><p><b>2:00</b> Embrilliance Usage</p></div>	<div><p><b>29</b></p><p><b>10:00</b> Everything Embroidery</p><p><b>10:00</b> Bench Pillows/ Table Toppers By Riley Blake</p></div>
<div><p><b>30</b></p></div>						

# May 2023

Sunday	Monday	Tuesday	Wednesday	Thursday	Friday	Saturday
	<b>1</b> 10:30 Quilting 102 (#5)	<b>2</b> 9:00 Applique Block of the Month 10:00 Jelly Roll Jacket 12:00 Applique Block of the Month 3:00 Applique Block of the Month 3:30, 4:45 Kids Sew 6:00 Applique Block of the Month	<b>3</b> 10:00 Baby Sew 10:30 Applique Block of the Month 1:30 Applique Block of the Month 4:00 Advanced Teen Garment	<b>4</b> 10:00 Stacking Blocks Runner 10:30 Quilt As You Go II 1:00 Blooming Basket 5:00 Landscape/Art Quilts	<b>5</b> 10:30 How To Embroider on a Basketball 11:00 Reservations Only! 6:00 Sip N Sew	<b>6</b> 9:30 Applique Block of the Month 10:30 DIME Perfect Embroidery 12:30 Applique Block of the Month 1:00 Palette PE 1:30 Embroidery Workshop
<b>7</b> 10:30 Jelly Roll Jacket	<b>8</b> 9:15 Kimberbell: Spoonful of Sunshine	<b>9</b> 10:30 Palette/PE-Design Workshop 11:00 Reservations Only! 3:30, 4:45 Kids Sew	<b>10</b> 10:00 Sew Social 10:30 Ultimate Travel Bag 2.0 4:00 Advanced Teen Garment	<b>11</b> 10:00 Sew Social 5:00 Landscape/Art Quilts 5:30 Palette/PE-Design Usage	<b>12</b> 1:00 IQ/MDC 101: Embroidery From Coloring Pages 11:30 T-Shirt Quilt 1:00 Mondo Bag	<b>13</b> 10:00 Sew Social 12:30 Economy Block Quilt 9:00 Kimberbell: Spoonful of Sunshine
<b>14</b> 10:30 Quilting 102 (#6) 2:00 Scan N Cut Usage	<b>15</b> 10:30 Solaris Learning Lab 10:30 Jelly Roll Jacket 1:00 My IQ Design Club 3:30, 4:45 Kids Sew 6:00 My IQ Design Club	<b>16</b> 10:00 Baby Sew 11:00 Reservations Only! 1:00 Scan n Cut Workshop 4:00 Advanced Teen Garment	<b>17</b> 10:30 Block Party 10:30 Clear Blue Tiles Usage 1:30 Applique & IQ/MDC 5:00 Anita University 201	<b>18</b> 1:00 IQ/MDC 101: Key Fobs & Patches 12:30 Kimberbell Cuties Table Toppers 12:30 Embroidery Block Of The Month	<b>19</b> 10:00 Everything Embroidery 2:00 Embrilliance Usage	<b>20</b> 10:00 Bench Pillows/ Table Toppers By Riley Blake
<b>21</b> 10:30 Your Quilt Class 11:00 Featherweight Club 12:00 Beach Screen Tote 2:00 Kimberbell Cuties Table Toppers	<b>22</b> 11:00 Loose Threads With Stephanie 3:30, 4:45 Kids Sew 6:00 Edge To Edge	<b>23</b> 10:00 Baby Sew 10:30 Ultimate Travel Bag 2.0 11:00 Reservations Only! 4:00 Advanced Teen Garment	<b>24</b> 10:00 Bench Pillows/ Table Toppers By Riley Blake 10:00 The Giving Doll 10:30 Decorative	<b>25</b> 10:00 Everything Embroidery 2:00 Embrilliance Usage	<b>26</b> 10:00 Bench Pillows/ Table Toppers By Riley Blake	<b>27</b> 10:00 Bench Pillows/ Table Toppers By Riley Blake
<b>28</b> 10:00 Michele's Open Sew	<b>29</b> <u>Closed in Honor of Memorial Day</u>	<b>30</b> 10:00 Kimberbell Open Sew Day 3:30, 4:45 Kids Sew	<b>31</b> 10:30 Quilted Jacket 4:00 Advanced Teen Garment			



Starting and growing a small business can be complicated. Embroidery doesn't have to be! Ditch the hassle of changing colors so you can process more orders. *It's easy with a multi needle embroidery machine.*



# June 2023

Sunday	Monday	Tuesday	Wednesday	Thursday	Friday	Saturday
				<b>1</b> <b>10:00</b> The Wonderful Quilt  <b>3:00</b> Weather Vane Table Runner  <b>5:00</b> Landscape/Art Quilts	<b>2</b> <b>11:00</b> Reservations Only!  <b>1:00</b> IQ/MDC 101 Quilt Block Basics  <b>6:00</b> Sip N Sew	<b>3</b> <b>9:30</b> Applique Block of the Month  <b>10:30</b> DIME Perfect Embroidery  <b>12:30</b> Applique Block of the Month  <b>1:00</b> Palette PE  <b>1:30</b> Embroidery Workshop
<b>4</b>  <b>10:00</b> Binding Workshop  <b>1:00</b> Clear View Zipper Bag  <b>1:30</b> Composition Journal	<b>5</b>  <b>10:00</b> Binding Workshop  <b>1:00</b> Clear View Zipper Bag  <b>1:30</b> Composition Journal	<b>6</b> <b>9:00</b> Applique Block of the Month  <b>12:00</b> Applique Block of the Month  <b>3:00</b> Applique Block of the Month  <b>3:30, 4:45</b> Kids Sew  <b>6:00</b> Applique Block of the Month	<b>7</b> <b>10:00</b> Sew Social  <b>10:00</b> Baby Sew  <b>10:30</b> Appliqué Block of the Month  <b>1:30</b> Appliqué Block of the Month  <b>4:00</b> Advanced Teen Garment	<b>8</b> <b>10:00</b> Sew Social  <b>5:00</b> Landscape/Art Quilts  <b>5:30</b> Palette/PE-Design Usage	<b>9</b> <b>11:00</b> Reservations Only!  <b>1:00</b> Memory Bear/Pillow  <b>1:00</b> IQ/MDC 101: Embroidery from Coloring Pages	<b>10</b> <b>10:00</b> Sew Social  <b>10:00</b> Scan N Cut Usage  <b>10:30</b> Economy Quilt Block
<b>11</b>	<b>12</b>	<b>13</b>	<b>14</b>	<b>15</b>	<b>16</b> <b>1:00</b> IQ/MDC 101: Key Fobs & Patches	<b>17</b> <b>10:00</b> Embroidery Block of the Month  <b>12:30</b> Kimberbell Cuties Table Toppers
<b>KIDS CAMP 6/12 - 6/15</b>						
	<b>10:00</b> Serger Boot Camp Tote Bag  <b>10:30</b> Tiffany in Quilts	<b>10:30</b> Palette/PE-Design Workshop  <b>3:30, 4:45</b> Kids Sew	<b>10:30</b> Jelly Roll Race  <b>4:00</b> Advanced Teen Garment	<b>10:30</b> Block Party  <b>1:00</b> Simply Appliqué  <b>5:00</b> Anita University 201		
<b>18</b>	<b>19</b> <b>10:00</b> Kimberbell Open Sew	<b>20</b> <b>10:00</b> Solaris Learning Lab  <b>1:00</b> My IQ Design Club  <b>3:30, 4:45</b> Kids Sew  <b>6:00</b> My IQ Design Club	<b>21</b> <b>10:00</b> Beginning Quilting  <b>10:00</b> Baby Sew  <b>1:00</b> Scan N Cut Workshop  <b>4:00</b> Advanced Teen Garment	<b>22</b> <b>10:00</b> Bench Pillows/ Table Toppers By Riley Blake  <b>10:00</b> The Giving Doll  <b>1:30</b> Applique & IQ/MDC	<b>23</b> <b>10:00</b> Everything Embroidery  <b>2:00</b> Embroidance Usage	<b>24</b> <b>10:00</b> Everything Embroidery  <b>10:00</b> Bench Pillows/ Table Toppers By Riley Blake  <b>2:00</b> Clear Blue Tiles Usage
<b>25</b> <b>10:00</b> Michele's Open Sew	<b>26</b> <b>10:30</b> Your Quilt Class  <b>11:00</b> Featherweight Club  <b>1:00</b> Runaround Bag  <b>2:00</b> Kimberbell Cuties Table Toppers	<b>27</b> <b>11:00</b> Loose Threads With Stephanie  <b>3:30, 4:45</b> Kids Sew  <b>6:00</b> Edge To Edge	<b>28</b> <b>10:00</b> Baby Sew  <b>11:00</b> Reservations Only!  <b>4:00</b> Advanced Teen Garment	<b>29</b> <b>10:00</b> Stacking Blocks Runner  <b>1:00</b> Blooming Basket	<b>30</b>	



# TheSewItOnline.com

*Join the Online Membership!*

*Yearly \$147 | Monthly \$19*

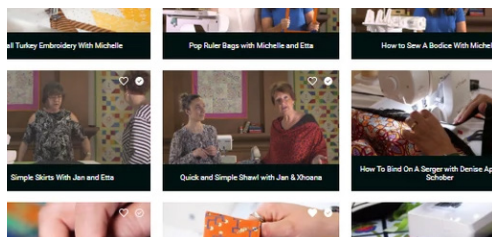
Learn New Sewing Skills From  
The Comfort Of Your Home!

Get access to the following:

- Over 150 webinars (& Counting)
- 9 Detailed Courses (& Counting)
- A Community of Sewers
- LIVE! Webinars & Events
- Monthly Newsletters & Updates
- Challenges, Contest & Giveaways
- & MORE!

## New class additions to Sew It Online!

**24 new videos on Baby Lock IQ Design  
and Brother My Design Center, plus  
written instructions. This is included in the  
yearly membership. Please watch the A-Z  
workshop, it will not disappoint!**



### Member ONLY Live Streams with Educators

When you are a member you get direct access to our educators. Join our bi-weekly live streams to be able to ask our educators questions directly and get more time with our educators. If you are not on FB it will be streamed live via YouTube on a private link. The biggest take away of this part of the membership is you can even request a live stream and we will make one on the topic just for you!

### Training Center (All Of Our Videos Ever Filmed!)

We have been filming videos for over 5 years. Get access to every one of our videos ever created in our training center. We released at least 3 videos a month for members only, 2 live streams for members only. All of our public live streams are available for 72 hours then added into the membership and not viewable to the public. Never miss a webinar again with the Sew It Online Membership.

### 5 Courses Included In Your Membership

A-Z Sewing Workshop

Serger Confidence Workshop

Beginner Quilting Workshop

Computer Usage For The  
Sewing/Embroidery World

Appliqué Quilt Blocks (18 Classes)

#### PINS & NEEDLES

**BOGO 1/2  
OFF Classes**

Expires 6/30/23. Cannot be  
Combined with any other offer.  
Maximum Value \$75. One per  
customer

CLASSBOGO50%

#### PINS & NEEDLES

**30% OFF**  
**Pre-Cuts**

Expires 6/30/23. Cannot be  
combined with any other offer.

PRECUT30

#### PINS & NEEDLES

**20% OFF**  
**Batting**

Expires 6/30/23. Cannot be  
combined with any other offer.

BATTING20

#### PINS & NEEDLES

**BUY 2 PANELS  
GET 1 FREE**

Expires 6/30/23. \$11.99 Value or  
Less. Cannot be combined with  
any other offer.

PANELB2G1