

JAN-MAR
2023

PINSANDNEEDLES.COM

THE PINS POST



Keeping your Love of Sewing Alive in 2023!

Cozy Up to a New Machine with Our New Year Closeout Deals.



SAVE THE DATE:

February 24th or 25th

Floriani Experience
\$49.99 with Kathi Quinn

March 24th & 25th

Deb Canham Event! Details to follow

April 17th to 19th

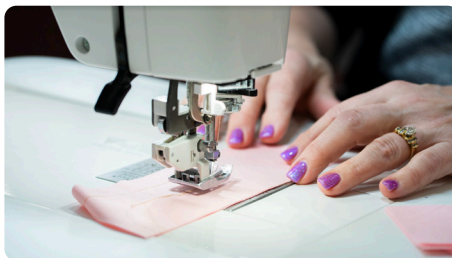
Join us for embroidery fun with **Tracey and Urban** from **Zundt Designs!**

May 19th & 20th

BERNINA Savvy Stitching + Clever Quilting & Q-Matic Discovery

WE CAN'T WAIT TO SEE YOU!

Come On In & We'll Stitch The Winter Blues Away!



Scan to Discover
New Machines,
Classes, and Events at
PinsAndNeedles.com



We are Ohio's Largest Sewing, Quilting, and Embroidery Dealer!

- ✓ Free Classes
- ✓ Huge Inventory
- ✓ On-Site Repairs
- ✓ Quality Notions
- ✓ Large Showroom
- ✓ Designer Fabric
- ✓ Special Events



Baby Lock
Solaris Vision



Bernina
Q24 (Long Arm)



Brother
PR1050X



PFAFF
640

baby lock

GET STARTED KIT

Solaris^{VISION}

SAVE UP TO 75% ON A GET STARTED KIT

WHEN YOU PURCHASE A BABY LOCK SOLARIS VISION EMBROIDERY, SEWING, AND QUILTING MACHINE.

- Baby Lock Love of Sewing Membership
- Baby Lock Solaris 30 Piece Foot Kit
- Baby Lock 5" x 7" Magnetic Frame
- Baby Lock Magnifying Lens
- Baby Lock Gold Scissor Set
- 6 More!

*OFFER VALID JANUARY 1- MARCH 24, 2023, AT PARTICIPATING BABY LOCK RETAILERS.

0% Interest

FOR UP TO 60 MONTHS

36 MONTHS ON PURCHASES OF \$2,000 OR MORE*

48 MONTHS ON PURCHASES OF \$3,000 OR MORE*

60 MONTHS ON PURCHASES OF \$5,000 OR MORE*



JAN'S JABBER

The new year is upon us! How about we encourage each other with our craft and passion of sewing? If anything, I have learned in the last few years is sewing is a fabulous hobby to keep our minds sharp!

Join us for our free Sew Socials & Everything Embroidery, where we demonstrate the newest techniques on your machines, followed by a super inspiring session of Sew & Tell! Bring your USB stick!

The hottest sewing project right now is Quilted Jackets! Make an heirloom out of a vintage or unfinished quilt! See how we are cutting quilts apart and make fabulous jackets, table toppers, stuffed bears and tote bags, all out of grandma's old quilt! Come check it out!

Lots of love from my family to yours!

Thanks, and see you soon! - Jan

TABLE OF CONTENTS

CLASSES

4	SEWING
6	EMBROIDERY
8	QUILTING
10	SERGER
11	SOFTWARE
12	SPECIALTY & CHARITY

CALENDARS

13	JANUARY
14	FEBRUARY
15	MARCH
16	MEMBERSHIP & COUPONS



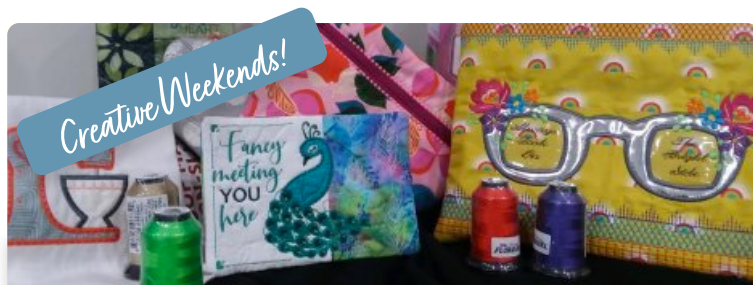
SEW SOCIAL!

(FREE 2-HOUR MEETING)

Join us monthly for a FREE 2-hour social with an hour of Sew & Tell and an hour-long presentation of the latest techniques & tools on the market! Find inspiration to take your projects to the next level!

Each Sew Social starts at 10:00 and ends at 12:00. See the dates below:

January	February	March
Wed 1/11	Wed 2/8	Wed 3/8
Thur 1/12	Thur 2/9	Thur 3/9
Sat 1/14	Sat 2/11	Sat 3/11



Everything Embroidery

FREE Monthly Class covering everything embroidery. We will cover the newest embroidery tech, products, threads, and more. Bring in your projects for show and tell! All Sessions 10:00 - 12:00

BONUS: Receive a **FREE design every month**. Join us to see what the free design is and the newest quilt square pattern!

*** 50% OFF FABRIC IS REDUCED TO 75% OFF ***

January	February	March
Fri 1/27	Fri 2/17	Fri 3/17
Sat 1/28	Sat 2/18	Sat 3/18

Appliqué Block of the Month

with Michele G. & Lynne J.

Class Fee: \$25.00/class (Pattern Included)
Class Level: Beginner (Great Starting Point!)



Want to get more proficient with your sewing machine? Appliqué techniques are your answer! Each month we will make a block using specific techniques, stitches, and feet to enhance your sewing capabilities. **(2.5-Hour Classes)**

Tue	1/3	9:00, 12:00, 3:00, 6:00
Wed	1/4	10:30, 1:30
Sat	1/7	9:30
Wed	2/1	10:30, 1:30
Sat	2/4	9:30
Tue	2/7	9:00, 12:00, 3:00, 6:00
Wed	3/1	10:30, 1:30
Sat	3/4	9:30
Tue	3/7	9:00, 12:00, 3:00, 6:00

Kids Sew (4 Sessions)

with Donna Miller

Class Fee: \$40 for 4 Classes (or \$15 each)

Your child will learn all about sewing machine operation, laying out patterns and cutting fabric, making elastic/drawstring casings, hemming, facing and much more. **Register for the 3:30 - 4:30 or 4:45 - 5:45 session.**



Tue	1/3, 1/10, 1/17, 1/24
Tue	2/7, 2/14, 2/21, 2/28
Tue	3/7, 3/14, 3/21, 3/28

Advanced Teen Garment Sewing (4 Sessions)

with Donna Miller

Class Fee: \$40 for 4 Classes (or \$15 each)
Class Level: Intermediate



Make a new wardrobe, choosing from patterns that Ms. Donna has available! Based on which project you choose, it could take 3 - 6 weeks. At least 1 year of sewing experience required, ages 10 - 16. **Classes meet from 4:00 to 5:00**

Wed	1/4, 1/11, 1/18, 1/25
Wed	2/1, 2/8, 2/15, 2/22
Wed	3/1, 3/8, 3/15, 3/22



Scan Here to
Search & Register
for Classes Online



Featherweight Club

with Michele Gillombardo

Class Fee: \$25.00 (Pattern Included)
Class Level: Beginner (Great Starting Point!)



Let's get those vintage sewing machines out of their box and sew something on them. You choose the project you would like to do during our club time. Get simple sewing and care tips for your Featherweight!

2/27	Mon	11:00 - 1:30
3/27	Mon	11:00 - 1:30

Michele's Open Sew

with Michele Gillombardo

Class Fee: \$20.00
(or \$40.00 w/ Instructor Help)



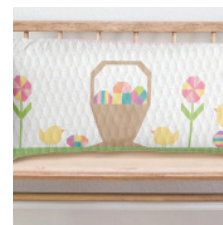
Whether you are sewing, quilting, serging, or embroidering. Bring your project(s) and have some fun with others for a full day of creating! You will have plenty of room to spread out.

Sun	1/1, 1/29, 2/26, 3/26	10:00 - 3:00
-----	-----------------------	--------------

Bench Pillows/Table Toppers by Riley Blake

with Michele Gillombardo

Class Fee: \$75.00 (Kit Included)
Class Level: Beginner



Each month we will sew together a seasonal themed Bench Pillow/Table Topper by Riley Blake. Techniques used include piecing, applique, using decorative stitches and using embellishments.

Thur(s)	1/26, 2/23, 3/23, 4/20	10:00 - 2:00
Sat(s)	1/28, 4/29	10:00 - 2:00
Sun	2/26, 3/26	10:00 - 2:00

Runaround Bag

with Donna Miller

Class Fee: \$25.00
Class Level: Beginner



Think of this class as "usage 3"! Great for anyone that just got done with basic usage and wants to learn more. This bag will teach you how to put a zipper in and how to line the inside so no seams show.

Mon	1/30, 2/27, 3/27, 4/24, 5/29, 6/26	1:00 - 3:30
-----	------------------------------------	-------------



Look at these ADORABLE Children's Prints...

Mickey, Elmo, Dinosaur, golf cars, and more designs for your little one's quilt(s.)

with Donna Miller

Class Fee: \$30.00
Class Level: Intermediate

Do you have an old shirt that's a memory of a loved one? Join Donna for her Memory Teddy Bear class and convert that shirt into a huggable teddy bear!

Fri *2/17* *1:00 - 4:00*



IQ Designer Shoulder Bag (2 Part Series)

with Patsy Weiss

Class Fee: \$30.00 Per Class
Class Level: Beginner

This is the 2nd of a two-part class. We will take all of those gorgeous, designed pieces from class one and assemble them on the sewing machine into a one of a kind embroidered adjustable strap shoulder bag.

Thur 3/2 10:30 - 1:30

Thur 3/9 10:30 - 1:30



Sip n' Sew with Donna Miller

Class Fee: \$25.00
Class Level: Beginner

Donna can help you finish a project you're working on and not able to complete or she will have a few options of new projects you can choose from!

Fri *1/6* *6:00 - 8:30*

<i>Fri</i>	<i>2/3</i>	<i>6:00 - 8:30</i>
------------	------------	--------------------

Fri *3/3* *6:00 - 8:30*



Patsy's Backpack

with Patsy Weiss

Class Fee: \$30.00
Class Level: Beginner

Make a simple 3 pocket backpack to carry around our summer necessities. Easy pattern for all levels of sewists. Pick three funky fabrics, or be more traditional and join us for an easy fun class.

Tue 1/31 10:30 - 1:30



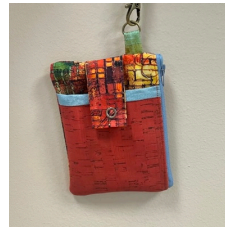
Zippered Wristlet

with Patsy Weiss

Class Fee: \$30.00
Class Level: Beginner

Looking for a little wristlet purse made with cotton and an accent of cork? This simple project is a great gift giving idea. Zipper pocket, detachable wrist band, and a snap pocket combine for this beauty.

Thur 3/16 2:00 - 5:00



Lucky Penny Wallet

with Donna Miller

Class Fee: \$45.00
Class Level: Beginner

Easy to make wallet it has two slip pockets, 6 card slots, one id holder. This is made out of cork and kit is included with the class (\$30 value).

Fri *3/10* *1:00 - 3:30*



Celebration of Color from Kaffe



BERNINA 475 QE (Kaffe Edition)

- Easy to navigate, modern color touch screen
- Front load bobbin
- 5.5mm wide stitches
- 21 exclusive hand-drawn stitches by Kaffe Fassett
- Raise or lower the presser foot at the same time with your knee
- Press a button to cut your thread
- Adjustable presser foot pressure
- Patchwork Foot #37 included



BERNINA 770 QE Plus (Kaffe Edition)

- Extra large 7" color touch screen
- BERNINA Stitch Regulator
- Pinpoint Placement and Lock function
- 74 quilting stitches, 8 embroidery fonts, 26 additional Kaffe quilting designs, 339 embroidery designs w/ 64 inspired by Kaffe
- KickStart Function
- Group/Ungroup and rearrange designs
- Quilting in the Hoop
- Optional BERNINA Smart Drive Technology module

EMBROIDERY

Kimberbell Cuties Table Toppers

with Michele Gillombardo

Class Fee: \$35.00
Class Level: Beginner

Create a new seasonal table topper every month entirely on your embroidery machine! Each 22 X 22 toppers features a variety of embellishments and coordinating block by block center and corner designs. These are all made in a 5 x7 hoop or larger. Purchase of KB Cuties Vol.2 CD required.

Sat	1/21	12:30 - 4:00	Mon	3/20	2:00 - 5:30
Sat	2/4	12:30 - 4:00	Sat	4/8	12:30 - 4:00
Mon	2/20	2:00 - 5:30	Mon	4/25	2:00 - 5:30
Sat	3/18	12:30 - 4:00			



Clear Blue Tiles Usage

with Michele Gillombardo

Class Fee: \$25 (Free if you purchased your tiles from Pins)
Class Level: Beginner

Are those Kimberbell Clear Blue tiles still in a box? Learn how to set them up, mark and embroider away. We will learn edge to edge or Custom Block Placement and design.

Thur	1/19	10:30 - 12:30	Sat	4/22	1:30 - 3:30
Thur	3/16	10:30 - 12:30			



Kimberbell Crossbody Bag

with Michele Gillombardo

Class Fee: \$25.00 (Design Included)
Class Level: Beginner

Create this Crossbody Bag entirely in the Hoop! Techniques include background quilting, piecing, monogramming and more!

Thur	1/12	3:00 - 5:30	Mon	3/6	3:00 - 5:30
------	------	-------------	-----	-----	-------------



Loose Threads

with Stephanie Marr

Class Fee: \$30.00
Class Level: Beginner

Stuck with an embroidery project? Need help finishing those IQ Designer/My Design Center projects? Come in to let me help you tie up those loose threads and embroidery projects!

Tue	1/24, 2/28, 3/28	11:00 - 2:00
-----	------------------	--------------

Embroidery Workshop

with Diann Raica

Class Fee: \$20.00
Class Level: Intermediate

Sharpen your embroidery skills with new techniques, learn to do in the hoop continuous quilting, free-standing lace, unique individual projects.

Sat	1/7, 2/4, 3/4	1:30 - 3:30
-----	---------------	-------------



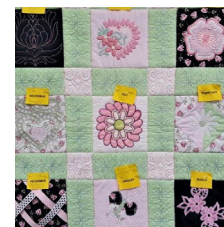
Embroidery Block-Of-The-Month

with Michele Gillombardo

Class Fee: \$20.00
Class Level: Beginner

Expand your knowledge of embroidery each month as we explore more embroidery tips like flip & stitch, embroidered piecing, embroidered decorative stitch, crazy patch, cut work, embroidery appliqué, embroidered fabric texturing, embroidered corner stones, sashing and MORE!

Sat	1/21	10:00 - 12:00
Sat	2/18	1:00 - 3:00
Sat	3/18	10:00 - 12:00
Sat	4/8	10:00 - 12:00



Anita University 201

with Luci Slywka

Class Fee: \$25.00
Class Level: Intermediate

This is a multi-month "in the hoop" embroidered quilt block series. We will do 1 to 3 blocks as time allows.

Thur	1/19	5:00 - 7:30
Thur	2/16	5:00 - 7:30
Thur	3/16	5:00 - 7:30



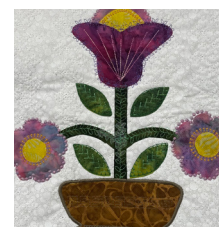
Appliqué & IQ/MDC

with Michele Gillombardo

Class Fee: \$25.00
Class Level: Beginner

Using IQ Design or Design Center in YOUR Baby Lock or Brother embroidery machines, we will program your machine to stitch out around your applique designs.

Thur	1/5	3:00 - 5:30
Mon	1/23	3:00 - 5:30
Sat	2/18	10:00 - 12:30
Mon	3/13	3:00 - 5:30



License to Create

with Michele Gillombardo

Class Fee: \$40.00
Class Level: Beginner

After you purchase the License to Create Box by Embellish (available at Pins and Needles) you will have the tools to create 5 embroidery/sewing designs. Each class will have you learning about specialty stabilizers, along with embroidery and sewing techniques. License to Create box includes all stabilizers, full color instructions binder, design pack and much more.

Thur	1/12, 2/16	10:30 - 2:30
------	------------	--------------



My IQ Design Club

with Stephanie Marr

Class Fee: \$35.00 (or \$25.00 BYO)
\$15.00 to Watch
Class Level: Intermediate

Calling all Destiny, Dream Machine, Solaris, Luminaire, Meridian, Altair, & Stellaire owners. Join us and learn advanced techniques using IQ Designer / My Design Center, etc. Join us to learn all the innovative features and get the aha moment of why you purchased this machine.



Tue 1/17, 2/21, 3/21 1:00 - 3:00 or 6:00 - 8:00

IQ Designer Workshop

with Karen Spears

Class Fee: \$35.00 to Borrow - \$25.00 BYO
Class Level: Intermediate

IQ Designer Workshops will open up the world of creating designs right on your machine. During the upcoming months we will explore scanning and working with shapes and fills.



Mon 1/23 1:00 - 3:30

IQ Designer Shoulder Bag 2 Part Series

with Patsy Weiss

Class Fee: \$30.00 PER CLASS
Class Level: Beginner

Let's design a stylish and functional, multi-pocketed, embroidered shoulder bag with an adjustable strap. This is a 2 class series. In the first class we will design the bag in IQ designer. In the second class we will use the sewing part of these amazing machines and sew our bag together.



Thur 3/2, 3/9 10:30 - 1:30

OESD Stitch Party

with Michele Gillombardo

Class Fee: \$30.00
Class Level: Beginner

Each month we will learn new embroidery techniques designed and created by OESD. You will receive full color instructions along with a free design. Learn all about stabilizers and specialty embellishments! See supply sheet for current months' project.

Sat 1/7, 2/4, 3/4, 4/1, 5/6 12:30 - 3:30



Solaris Learning Lab

with Patsy Weiss

Class Fee: \$30.00
Class Level: Beginner



A class for Solaris owners to discover what we love about this fantastic machine. Does not replace usage and advanced usage class. We will take a deeper dive into what these beauties can do. This is a learning process, not a project class.

January class will focus on connecting embroideries. We will explore connecting with the projector, with the border function and with pattern connect. Plus, the upgrade connect patterns!!!

February class will focus on the lights, camera and projector that make this machine so special.

March class will focus on creative buttonholes and button options in both sewing and embroidery like you never imagined.

Tue 1/17, 2/21, 3/21, 4/18, 5/16, 6/20 10:00 - 1:00

Playing with The Upgrade-Deselect Button

with Patsy Weiss

Class Fee: \$25.00
Class Level: Beginner

Join us for a fun class of creating with the built-in designs on your Solaris. We will take existing designs, remove parts of them with the new deselect feature, then add to other existing designs to create something new.

Tue 1/10 10:30 - 1:00



BERNINA L890

- One-Step BERNINA Air Threader -
- Intuitive operation via touch screen -
- Fast, precise, & quiet -
- Total Stitch Control-

Special In-Store Only Discounts & Savings!

(Classroom Demo Models Available)



Quilting 102

with Michele Gillombardo

Class Fee: \$120.00
Class Level: Beginner

Fine tune your quilting skills with creating this large 5 Block Quilt. We will review piecing, accurate cutting, 1/4 inch and mitered border techniques in this Quilt Course. This six-part class course is for the novice and seasoned quilter! You will complete the quilt in the course!

#1	Mon	2/20	10:30 - 1:30
#2	Mon	3/6	10:30 - 1:30
#3	Mon	3/20	10:30 - 1:30
#4	Tue	4/25	10:30 - 1:30
#5	Mon	5/1	10:30 - 1:30
#6	Mon	5/15	10:30 - 1:30

Your Quilt Class

with Michele Gillombardo

Class Fee: \$30.00
Class Level: Beginner

New to quilting or are you a quilter with years of experience? This class is for both! We can help you in whatever stage you are at creating your quilt. Learn to read the pattern, sewing Y seams, getting the perfect 1/4-inch seam, embroidery, or putting on a binding.

Mon 1/30, 2/27, 3/27 10:30 - 1:30



Quilt As You Go II

with Karen Spears

Class Fee: \$25.00
Class Level: Beginner

A new look at Quilt as You Go makes it easy to quilt each block individually and then join them together on your home sewing machine no matter the size. Rather than quilting just the block and then adding the backing this method allows you to do all three layers at once. Perfect for any block!

Thur 1/5 10:30 - 1:00
Fri 3/17 10:30 - 1:00



Ultimate Travel Tote (2 part class)

with Susan Scott

Class Fee: \$75.00
Class Level: Intermediate

Perfect for weekend excursions. Learn techniques for doing zippers, padded adjustable carrying straps, using different feet on your machine and using a stylist. Plus, bias binding and cutting out using circle rulers.

Wed 2/15 & 2/22 10:30 - 12:30



Continuing Education classes are available Wed. 3/1 and 3/8 \$25.00

Free Motion Quilting Mastery Class

with Etta Trimpi

Class Fee: \$100.00 for All 5 Sessions (\$129.00 to Borrow a Machine)
Class Level: Intermediate

Tired of sending out your quilts? We will start from the beginning and learn how to do the quilting. This is a process and takes some time, so in this series of classes we will learn how to do just that.

#1	Sat	2/18	1:00 - 3:30
#2	Sat	3/18	1:00 - 3:30
#3	Sat	4/22	1:00 - 3:30
#4	Sat	5/27	1:00 - 3:30
#5	Sat	6/24	1:00 - 3:30



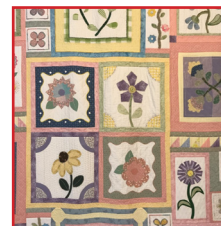
Finish Your Appliqué Quilt Block

with Michele Gillombardo

Class Fee: \$50.00
Class Level: Intermediate

You are so close to finishing the Applique Quilt Block! Let's put it all together! This class will help you decide which way to finish it and work all day putting the quilt top together. Be sure to bring those extra fabrics to class!

Mon 1/30 10:00 - 4:00
Sat 3/11 10:00 - 4:00



Edge to Edge

with Kathy Zietlow

Class Fee: \$25.00
Class Level: Beginner

If you've ever wanted to finish a quilt quickly, make a quilt completely on your own, or see what else you can do with your embroidery machine: you can now use your home embroidery machine to get quilting results like you'd see from a long-arm quilter.

Tue 1/24, 2/28, 3/28 6:00 - 8:30

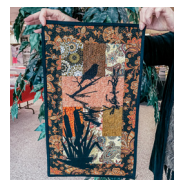


Landscape / Art Quilts

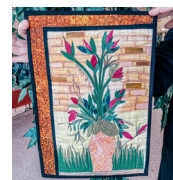
with Luci Slywka



January



February



March

Class Fee: \$25.00
Class Level: Intermediate

If you are curious about the interesting process of Landscape or Art type of quilting this class will provide a look at the some of the techniques for making a lovely art piece.

Thur 1/5, 1/12, 2/2, 2/9, 3/2, 3/9 5:00 - 7:30

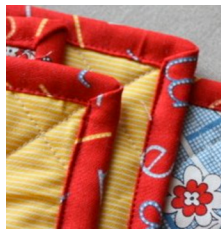
Binding Workshop

with Karen Spears

Class Fee: \$30.00
Class Level: Beginner

You created your lovely quilt, now let's finish it with a classic binding. Learn different ways to bind off your quilt including straight bias binding and scalloped binding.

Tue 1/17 10:30 - 1:30
Tue 3/28 10:30 - 1:30



Basic Quilt

with Karen Spears

Class Fee: \$30.00
Class Level: Beginner

Learning a basic quilt with layer cakes and charm packs, it could be your baby quilt or a throw. All the basics, sewing 1/4" seams, cutting accurately and much more!

Sat 1/21, 2/18, 3/18 10:30 - 1:30



Block Party

with Karen Spears

Class Fee: \$25.00
Class Level: Beginner

No matter your skill level or the machine you own, this class is for you. Join us as we recreate classic antique blocks and review tips and tricks to design a quilt sampler that is unique to each person.

Thur 1/19, 2/16, 3/16, 4/20, 5/18, 6/15 10:30 - 1:00



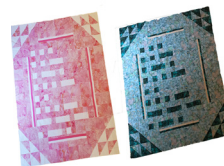
Survivor Quilt

with Josie Prokop

Class Fee: \$25.00
Class Level: Beginner

Designed with cancer survivors and those fighting illness in mind, this quilt will wrap the recipient in your love and support even if you cannot be present. The hidden meaning adds an extra layer of comfort. Simple steps make the message come to life. Join us to start piecing your message of hope to create your virtual hug.

Sat 3/11, 4/8 12:00 - 2:30



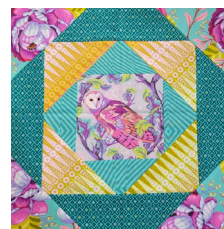
Economy Block Quilt

with Stephanie Marr

Class Fee: \$30.00
Class Level: Beginner

Learn a quick and easy quilt block technique and turn it into a lap size quilt quickly! Minimal piecing skills required, so kid and beginner friendly! Use large print focal fabrics to make the blocks really stand out!

Fri 1/20, 2/17 10:30 - 1:30



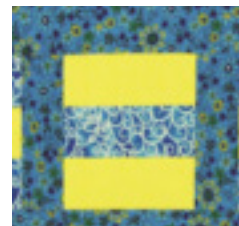
Beginning Quilting

with Karen Spears

Class Fee: \$50.00
Class Level: Beginner

New to quilting but don't know where to begin? This one-day workshop will get you started. You will learn to use a rotary cutter, piece two different blocks, add sashing and borders, and make a quilt "sandwich". Learn the basics of simple machine quilting and adding a binding. This is a class not to be missed, learn every step of quilting and complete your project to take home.

Tue 2/14 10:30 - 3:30



CREATIVE ICON™ 2

The creative icon™ 2 sewing and embroidery machine marks a revolutionary step for sewists. A world first in the home sewing industry, artificial intelligence and voice control features give you the ultimate connectivity, enabling you to reach new levels of your craft, effortlessly.

TRADE-IN SPECIALS ARE AVAILABLE!



SERGER

Exploring Serger Feet

with Michele Gillombardo

Class Fee: \$40.00

Class Level: Beginner

This technique class will have you getting comfortable using all those different Serger Presser Feet. We will take one at a time and create samples that you can have as a reference. Fabric Kit included with class cost. See supply list for additional items to bring.



Thur	1/5	10:30 - 2:30
Thur	3/2	10:30 - 2:30
Thur	3/30	10:30 - 2:30

Serger Ruffle Pillow

with Michele Gillombardo

Class Fee: \$60.00

Class Level: Beginner

Using a variety of serger feet and techniques, we will create this pillow completely on the serger!



Thur	4/27	10:00 - 4:00
------	------	--------------

Serger Party Skirt

with Michele Gillombardo

Class Fee: \$40.00

Class Level: Beginner

Serger this adorable party skirt completely on your serger. Stitches include a rolled hem, creating ruffles and completing construction using a 4-thread overlock! All you need is a Jelly Roll! (and maybe some elastic)



Mon	1/23	10:30 - 2:30
-----	------	--------------

Nervous Serger Zipper Bag

with Patsy Weiss

Class Fee: \$30.00

Class Level: Beginner

Nervous or new to sergers? We will make a cosmetic bag with a zipper, cording and decorative stitches all done using your serger. You will be surprised at how easy and how much you will learn. Do not need chain or cover stitch.



Thur	3/16	10:30 - 1:30
------	------	--------------

Serger Boot Camp

Tote Bag with Michele Gillombardo

Class Fee: \$79.00 (Includes Kit)

Class Level: Beginner

Create this tote bag using your serger! We will do a coverhem, create puffing, embellish our tote bag fabric and much more. Kits are included with this class. Bring a lunch, snacks and drinks are provided. I have a 99% rate of students finishing their tote in class. Spend the day learning and creating with your serger!



Thur	2/2	10:00 - 5:00
Thur	4/2	10:00 - 5:00



Koala

Save \$500

On a Koala Studio

ARROW
SEWING



Millie Cutting Table & Ironing Table

MSRP \$799

Sale \$499!

Dime Perfect Embroidery

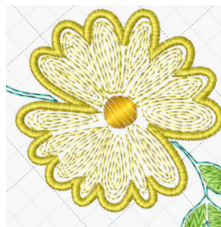
with Mary Ann Nicholas

Class Fee: \$30.00
Class Level: Intermediate

PEP is a full-scale digitizing program. In class you will learn to edit, create, merge, convert files and much more. In each lesson you will learn to digitize step by step.

Sat 1/7, 2/4, 3/4 10:30 - 12:30

****Requires a laptop (with software installed, a mouse, paper, and a pencil.**



Palette/PE-Design Workshop

with Mary Ann Nicholas

Class Fee: \$30.00
Class Level: Intermediate

This workshop is project-oriented. Each workshop is aimed at teaching you to use the program to its fullest. You can edit, convert, create your own backgrounds and designs.

Sat	1/7	1:00 - 3:00
Tue	1/10	10:30 - 12:30
Sat	2/4	1:00 - 3:00
Tue	2/9	10:30 - 12:30



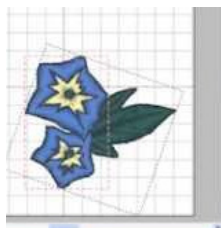
Palette/PE-Design Usage

with Mary Ann Nicholas

Class Fee: \$35.00
(Free w/ Software Purchase)
Class Level: Beginner

This usage class was designed to show you how to use the tools for each section of the program

Thur 1/12, 2/9, 3/9 5:30 - 7:30



She loves educating and helping you create. Be sure to check out our class calendar or register for a class anytime at PinsAndNeedles.com

brother

Turn Scanned Images
into Cut Designs!



SDX 330D



Long Arms are now
affordable!

Machine, frame and stitcher as low as \$2,499.99.

Visit our store to try out your next machine!

Q'nique 19X Elite

\$7,699

Normally: \$8,499.95

+ FREE CUTIE OR Q-ZONE FRAME*

SAVE OVER \$2,000



Q'nique 16X Elite

\$4,999

Normally: \$5,999.95

+ FREE CUTIE OR Q-ZONE FRAME*

SAVE OVER \$2,200



Specialty & Charity

Scan N Cut Usage

with Michele Gillombardo

Class Fee: \$30.00
(Free With Machine Purchase)
Class Level: Beginner

Learn how to use your Brother Scan N Cut! Learn the ins and outs and take your skills to the next level.

Thur 1/19 1:30 - 4:30
Mon 3/27 1:30 - 4:30



Reservations Only

(Not an instructed class)

Class Fee: \$20.00 per Table

Are you tired of being stuck at home and need to get out?! Come use our space and get some sewing done with no interruptions from home! This is not an "instructed" class, simply a time slot for you to use our space and gain motivation to keep your projects going! Each person will have their own table and be 6+ feet apart. **All sessions meet from 11:00 - 4:00.**

January 1/6, 1/13, 1/24, 1/26, 1/28
February 2/15, 2/22
March 3/2, 3/8, 3/15, 3/17, 3/22, 3/23, 3/30



Baby Sew

Class Fee: (Free) Charity Event

Our volunteer groups get together to sew lap size quilts, NICU size quilts, tote bags and other items that make children of all ages smile a bit and help take their minds off their physical challenges. Our items are donated to babies, parents, and sick children at local hospitals.

Wed 1/4, 1/18, 1/25, 2/1, 2/15, 2/22, 3/1, 3/15, 3/22



Fabric Painting

with Dottie Gilchrist

Class Fee: \$30.00
Class Level: Intermediate

Turn a plain piece of material into a beautiful piece of art! It's not about having art skills it's learning to create and control the paint.

Sat 1/21 10:30 - 1:30



Scan N Cut Workshop

with Michele Gillombardo

Class Fee: \$20.00
(Free With Machine Purchase)
Class Level: Beginner

Learn how to use your Brother Scan N Cut! Learn the ins and outs and take your skills to the next level.

Wed 1/25, 2/22, 3/22 1:00 - 3:00



The Giving Doll

Class Fee: (Free) Charity Event

What is The Giving Doll? Our mission is to give faith, love, joy, hope and comfort to children world-wide, at times of need through the construction and distribution of handmade dolls.

This is an all day charity sewing day, if you are planning on hanging out with us for the entire day, please bring a lunch.

Thur 1/26, 2/23, 3/23



JANOME Continental M7 QCS BONUS Bundle!

Celebrate The Limited Edition Continental M7

Learn to use this incredible machine by walking through the workbook, and expand your quilting with a variety of templates and rulers. There are also three AcuFeed Flex foot options and the Ultraglide Needleplat and Foot. Make sure that you use the right needle for your project by choosing between the three needle sets.



Retail: \$7,499

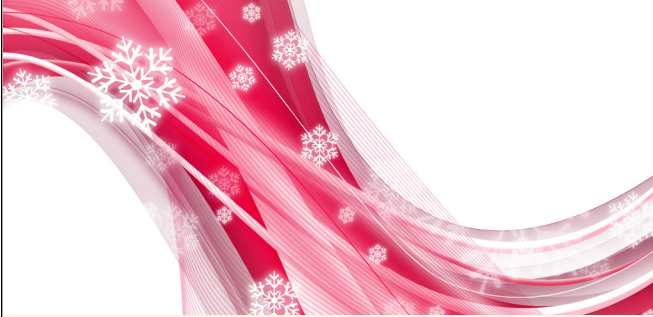
Your Price \$4,999

****Limited Quantities***


January 2023

Sunday	Monday	Tuesday	Wednesday	Thursday	Friday	Saturday
1 10:00 Michele's New Year Day Open Sew 	2	3 9:00 Applique Block of the Month 12:00 Applique Block of the Month 3:00 Applique Block of the Month 3:30, 4:45 Kids Sew 6:00 Applique Block of the Month	4 10:00 Baby Sew 10:30 Applique Block of the Month 1:30 Applique Block of the Month 4:00 Advanced Teen Garment Sewing	5 10:30 Exploring Serger Feet 10:30 Quilt as You Go II 3:00 App + IQ/MDC 5:00 Landscape/Art Quilts	6 11:00 Reservations Only! 6:00 Sip N Sew	7 9:30 Applique Block of the Month 10:30 DIME Pro 12:30 OESD Stitch Party 1:00 Palette PE 1:30 Embroidery Workshop
8	9	10 10:30 Playing With The Upgrade-Deselect Button 10:30 Palette/PE-Design Workshop 3:30, 4:45 Kids Sew	11 10:00 Sew Social 4:00 Advanced Teen Garment Sewing	12 10:00 Sew Social 10:30 License to Create 3:00 American Girl Shopping Trip 3:00 Kimberbell Crossbody Bag 5:00 Landscape/Art Quilts 5:30 Palette/PE-Design Usage	13 11:00 Reservations Only!	14 9:00 Kimberbell One Sweet Spring (2 Day Event) 10:00 Sew Social
15 9:00 Kimberbell One Sweet Spring (2 Day Event)	16	17 10:00 Solaris Learning Lab 10:30 Binding Workshop 1:00 My IQ Design Club 3:30, 4:45 Kids Sew 6:00 My IQ Design Club	18 10:00 Baby Sew 4:00 Advanced Teen Garment Sewing	19 10:30 Block Party 10:30 Clear Blue Tiles Usage 1:30 Scan N Cut Usage 5:00 Anita University 201	20 10:30 Economy Block Quilt	21 10:00 Embroidery Block of the Month 10:30 Basic Quilt 10:30 Fabric Painting 12:30 Kimberbell Cuties Table Toppers
22 9:30 Bev UFO	23 10:30 Jelly Roll Jacket #1 10:30 Serger Party Skirt 1:00 IQ Designer Workshop 3:00 Applique And IQ/MDC	24 11:00 Reservations Only! 11:00 Loose Threads With Stephanie 3:30, 4:45 Kids Sew 6:00 Edge to Edge	25 10:00 Baby Sew 4:00 Advanced Teen Garment Sewing	26 10:00 Bench Pillows/ Table Toppers By Riley Blake 10:00 The Giving Doll 11:00 Reservations Only!	27 10:00 Everything Embroidery 2:00 Embrilliance Usage	28 10:00 Everything Embroidery 10:00 Bench Pillows/ Table Toppers By Riley Blake 11:00 Reservations Only!
29 10:00 Michele's Open Sew Sunday	30 10:00 Finish Your Applique Quilt Block 10:30 Your Quilt Class 1:00 Runaround Bag	31 10:30 Patsy's Backpack 11:00 Reservations Only!				

February 2023

Sunday	Monday	Tuesday	Wednesday	Thursday	Friday	Saturday
			1 10:00 Baby Sew 10:30 Applique Block of the Month 1:30 Applique Block of the Month 4:00 Advanced Teen Garment Sewing	2 10:00 Serger Boot Camp Tote Bag 5:00 Landscape/Art Quilts	3 6:00 Sip N Sew	4 9:30 Applique Block (OTM) 10:30 DIME Pro 12:30 Kimberbell Cuties Table Toppers 12:30 OESD Stitch Party 1:00 Palette PE 1:30 Embroidery Workshop
5	6 10:30 Jelly Roll Jacket #2	7 9:00 Applique Block of the Month 12:00 Applique Block of the Month 3:00 Applique Block of the Month 3:30, 4:45 Kids Sew 6:00 Applique Block of the Month	8 10:00 Sew Social 4:00 Advanced Teen Garment Sewing	9 10:00 Sew Social 5:00 Landscape/Art Quilts 5:30 Palette/PE-Design Usage	10	11 10:00 Sew Social
12	13	14 10:30 Beginning Quilting 10:30 Palette/PE-Design Workshop 3:30, 4:45 Kids Sew 	15 10:00 Baby Sew 11:00 Reservations Only! 4:00 Advanced Teen Garment Sewing	16 10:30 License To Create 10:30 Block Party 5:00 Anita University	17 10:00 Everything Embroidery 10:30 Economy Block Quilt 1:00 Memory Bear/Pillow	18 10:00 Everything Embroidery 10:00 Applique & IQ/MDC 10:30 Basic Quilt 1:00 Free Motion Quilting Mastery Class (#1 of 5) 1:00 Embroidery Block Of The Month
19	20 10:30 Quilting 102 Course (6 Classes) 2:00 Kimberbell Cuties Table Toppers	21 10:00 Solaris Learning Lab 1:00 My IQ Design Club 3:30, 4:45 Kids Sew 6:00 My IQ Design Club	22 10:00 Baby Sew 11:00 Reservations Only! 1:00 Scan n Cut Workshop 4:00 Advanced Teen Garment Sewing	23 10:00 Bench Pillows/ Table Toppers By Riley Blake 10:00 The Giving Doll	24 9:30 Floriani Embroidery Basics Event 2:00 Embrilliance Usage	25 9:30 Floriani Embroidery Basics Event
26 10:00 Michele's Open Sew 10:00 Bench Pillows/ Table Toppers By Riley Blake	27 10:30 Your Quilt Class 11:00 Featherweight Club 1:00 Runaround Bag	28 11:00 Loose Threads With Stephanie 3:30, 4:45 Kids Sew 6:00 Edge To Edge	<div> <p>Ready to grow your small business?</p>  <p>Starting and growing a small business can be complicated. Embroidery doesn't have to be! Ditch the hassle of changing colors so you can process</p> </div>			

March 2023

Sunday	Monday	Tuesday	Wednesday	Thursday	Friday	Saturday	
			<div>1</div> <div>10:00 Baby Sew</div> <div>10:30 Appliqué Block of the Month</div> <div>1:30 Appliqué Block of the Month</div> <div>4:00 Appliqué Block of the Month</div>	<div>2</div> <div>10:30 Exploring Serger Feet</div> <div>10:30 IQ Designer Shoulder Bag #1</div> <div>10:30 Story Quilt</div> <div>5:00 Landscape/Art Quilts</div>	<div>3</div> <div>6:00 Sip N Sew</div>	<div>4</div> <div>9:30 Appliqué Block of the Month</div> <div>12:30 OESD Stitch Party</div> <div>1:30 Embroidery Workshop</div>	
	<div>5</div>	<div>6</div> <div>3:00 Kimberbell Crossbody Bag</div>	<div>7</div> <div>9:00 Applique Block of the Month</div> <div>12:00 Applique Block of the Month</div> <div>3:00 Applique Block of the Month</div> <div>3:30, 4:45 Kids Sew</div> <div>6:00 Applique Block of the Month</div>	<div>8</div> <div>10:00 Sew Social</div> <div>4:00 Advanced Teen Garment Sewing</div> <div>11:00 Reservations Only!</div>	<div>9</div> <div>10:00 Sew Social</div> <div>10:30 IQ Designer Shoulder Bag #2</div> <div>5:00 Landscape/Art Quilts</div> <div>5:30 Palette/PE-Design Usage</div>	<div>10</div> <div>1:00 Lucky Penny Wallet</div>	<div>11</div> <div>10:00 Sew Social</div> <div>10:00 Finish Your Applique Quilt Block</div> <div>12:00 Survivor Quilt</div>
	<div>12</div>	<div>13</div> <div>3:00 Applique And IQ/MDC</div>	<div>14</div> <div>10:30 Palette/PE-Design Workshop</div> <div>3:30, 4:45 Kids Sew</div>	<div>15</div> <div>10:00 Baby Sew</div> <div>11:00 Reservations Only!</div> <div>4:00 Advanced Teen Garment Sewing</div>	<div>16</div> <div>10:30 Nervous Serger Zipper Bag</div> <div>10:30 Block Party</div> <div>10:30 Clear Blue Tiles Usage</div> <div>2:00 Zippered Wristlet</div> <div>5:00 Anita University 201</div>	<div>17</div> <div>10:00 Everything Embroidery</div> <div>10:30 Quilt As You Go II</div> <div>11:00 Reservations Only!</div>	<div>18</div> <div>10:00 Everything Embroidery</div> <div>10:00 Embroidery Block of the Month</div> <div>10:30 Basic Quilt</div> <div>12:30 Kimberbell Cuties Table Toppers</div> <div>1:00 Free Motion Quilting Mastery Class (#1 of 5)</div>
	<div>19</div>	<div>20</div> <div>10:30 Quilting 102 (#3)</div> <div>2:00 Kimberbell Cuties Table Toppers</div>	<div>21</div> <div>10:00 Solaris Learning Lab</div> <div>1:00 My IQ Design Club</div> <div>3:30, 4:45 Kids Sew</div> <div>6:00 My IQ Design Club</div>	<div>22</div> <div>10:00 Baby Sew</div> <div>11:00 Reservations Only!</div> <div>1:00 Scan N Cut Workshop</div> <div>4:00 Advanced teen Garment Sewing</div>	<div>23</div> <div>10:00 Bench Pillows/ Table Toppers By Riley Blake</div> <div>10:00 The Giving Doll</div> <div>10:30 Paper Piecing Swan</div>	<div>24</div> <div>10:00 Deb Canham Event</div> <div>2:00 Embrilliance Usage</div>	<div>25</div> <div>10:00 Deb Canham Event</div>
<div>26</div> <div>10:00 Michele's Open Sew</div> <div>10:00 Bench Pillows/ Table Toppers By Riley Blake</div>	<div>27</div> <div>10:30 Your Quilt Class</div> <div>11:00 Featherweight Club</div> <div>1:00 Runaround Bag</div> <div>1:30 Scan N Cut Usage</div>	<div>28</div> <div>10:30 Binding Workshop</div> <div>11:00 Loose Threads With Stephanie</div> <div>3:30, 4:45 Kids Sew</div> <div>6:00 Edge To Edge</div>	<div>29</div>	<div>30</div> <div>10:30 Exploring Serger Feet</div> <div>11:00 Reservations Only!</div>	<div>31</div>		



TheSewItOnline.com

Join the Online Membership!

Yearly \$147 | Monthly \$19

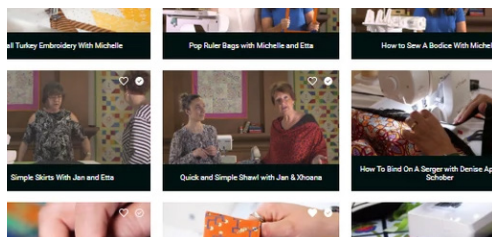
Learn New Sewing Skills From
The Comfort Of Your Home!

Get access to the following:

- Over 150 webinars (& Counting)
- 9 Detailed Courses (& Counting)
- A Community of Sewers
- LIVE! Webinars & Events
- Monthly Newsletters & Updates
- Challenges, Contest & Giveaways
- & MORE!

New class additions to Sew It Online!

**24 new videos on Baby Lock IQ Design
and Brother My Design Center, plus
written instructions. This is included in the
yearly membership. Please watch the A-Z
workshop, it will not disappoint!**



Member ONLY Live Streams with Educators

When you are a member you get direct access to our educators. Join our bi-weekly live streams to be able to ask our educators questions directly and get more time with our educators. If you are not on FB it will be streamed live via YouTube on a private link. The biggest take away of this part of the membership is you can even request a live stream and we will make one on the topic just for you!

Training Center (All Of Our Videos Ever Filmed!)

We have been filming videos for over 5 years. Get access to every one of our videos ever created in our training center. We released at least 3 videos a month for members only, 2 live streams for members only. All of our public live streams are available for 72 hours then added into the membership and not viewable to the public. Never miss a webinar again with the Sew It Online Membership.

5 Courses Included In Your Membership

A-Z Sewing Workshop

Serger Confidence Workshop

Beginner Quilting Workshop

Computer Usage For The
Sewing/Embroidery World

Appliqué Quilt Blocks (18 Classes)

PINS & NEEDLES

Four Classes for

\$75

During January & February

Expires 2/28/23. Cannot be
Combined with any other offer.
Maximum of 1 per person.
Original class value cannot max \$35.

NL4475

PINS & NEEDLES

25% OFF
Flannel

Expires 3/31/23. Cannot be
combined with any other offer.

NL25FLAN

PINS & NEEDLES

25% OFF
Presser Feet

Expires 3/31/23. Cannot be
combined with any other offer.

NL25FEET

PINS & NEEDLES

**BUY 3 NEEDLES
GET 1 FREE**

Expires 3/31/23. Cannot be
combined with any other offer.

NLB3G1F